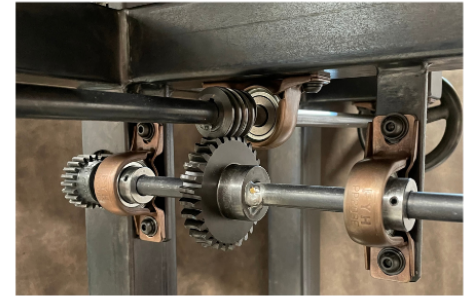


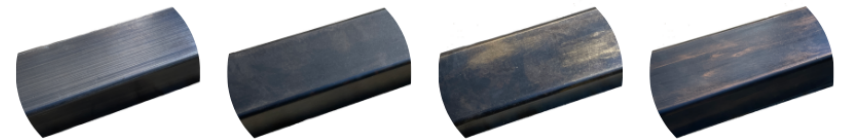


DESK TOP EDGE DETAIL
Each desk top is wrapped with one of a kind natural grain leather



GEAR DETAIL
The gearing is meticulously designed to ensure smooth height adjustments.

FRAME FINISHES



Brushed Pewter

Oiled Iron

Iron with brass highlights

Iron with bronze highlights

WHEEL & HANDLE FINISHES



Oiled Iron Wheel
Vintage Bronze Handle

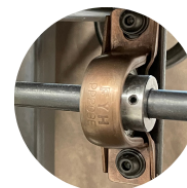


Oiled Iron Wheel w Brass Highlights
Vintage Brass Handle



Polished Pewter Wheel
Zinc Plated Handle

ACCENT HARDWARE / FINISHES WILL MATCH HANDLE FINISH



Vintage Bronze



Vintage Brass



Zinc Plated

THE COREY ADJUSTABLE HEIGHT DESK

DESIGNED AND FABRICATED BY MONTANA CRAFTSMAN MATTHEW GEIGER

The Corey Desk is a confluence of the power of exposed gearing, the soothing lines of a clean modern frame, and the distinction of natural top grain leather. Handmade and meticulously designed, these one of a kind pieces are inspired by our industrial heritage while honoring the art of craftsmanship. Each top is painstakingly tested to excel in function, comfort, and aesthetic. Like all our custom designs, no two Corey Desks will ever be identical.

PICTURED

Top Grain Leather
Oiled Iron Frame
Polished Pewter Wheel
Zinc Plated Handle and Accent Hardware

FRAME DIMENSIONS

Sitting Height 24"
Full Standing Height 41.5"
Length 48"
Width 23"
Frame Width at Floor Base 28.5"

DESK TOP DIMENSIONS

Leather surface 30" x 56"
Overall Size 30" x 60"