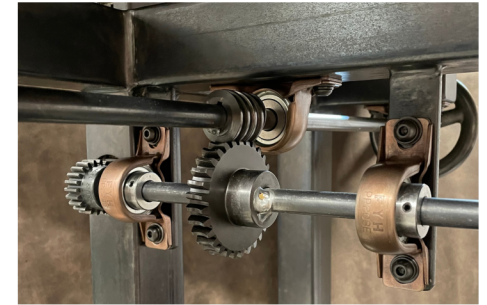


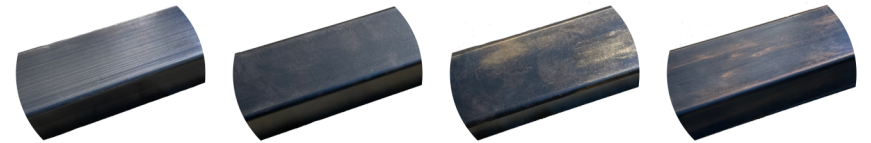


**DESK TOP EDGE DETAIL**  
Each desk top is wrapped with one of a kind natural grain leather



**GEAR DETAIL**  
The gearing is meticulously designed to ensure smooth height adjustments.

FRAME FINISHES



Brushed Pewter

Oiled Iron

Iron with brass highlights

Iron with bronze highlights

WHEEL & HANDLE FINISHES



Oiled Iron Wheel  
Vintage Bronze Handle

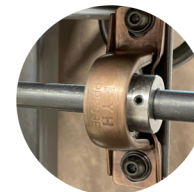


Oiled Iron Wheel w Brass Highlights  
Vintage Brass Handle



Polished Pewter Wheel  
Zink Plated Handle

ACCENT HARDWARE / FINISHES WILL MATCH HANDLE FINISH



Vintage Brass



Vintage Bronze



Zinc Plated

**THE COREY ADJUSTABLE HEIGHT DESK**

DESIGNED AND FABRICATED BY MONTANA CRAFTSMAN MATTHEW GEIGER

The Corey Desk is a confluence of the power of exposed gearing, the soothing lines of a clean modern frame, and the distinction of natural top grain leather. Handmade and meticulously designed, these one of a kind pieces are inspired by our industrial heritage while honoring the art of craftsmanship. Each top is painstakingly tested to excel in function, comfort, and aesthetic. Like all our custom designs, no two Corey Desks will ever be identical.

**PICTURED**

Top Grain Leather  
Oiled Iron Frame  
Polished Pewter Wheel  
Zinc Plated Handle and Accent Hardware

**FRAME DIMENSIONS**

Sitting Height 24"  
Full Standing Height 41.5"  
Length 48"  
Width 23"  
Frame Width at Floor Base 28.5"

**DESK TOP DIMENSIONS**

Leather surface 30" x 56"  
Overall Size 30" x 60"